

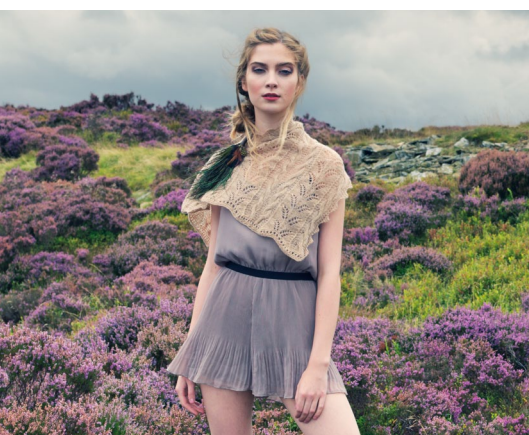


YARNTELIER AT CHATSWORTH HOUSE

SATURDAY 18TH & SUNDAY 19TH APRIL 2020

An exclusive Hand Knitting Workshop with
Louisa Harding held within the Stables Courtyard
at the beautiful and historic Chatsworth House.

Louisa Harding's design collection Cook's Study Hill was inspired by a visit to Chatsworth House. She would like to share with you this amazing resource and show you how to translate your creative ideas into an original design for a hand knitted lace scarf or shawl.





Itinerary

SATURDAY 18TH APRIL 2020

9.15 am for 9.30 am start

Arrive at Chatsworth House

Make your way to the Cavendish Restaurant housed within the Stables Courtyard, here you will be directed to the 'Racing Room', our home for the weekend.

Tea, coffee and pastries on arrival with an introduction by Louisa Harding to the weekend.

10.00 am

An inspirational private guided tour of Chatsworth House. You are encouraged to take photos, sketch and make notes.

12.30 pm

Two course buffet lunch.

1.30 pm

Workshop - Part one

An introduction to shawl and scarf design, lace stitches, edgings and knitted details. Louisa will guide you as we knit reference swatches which contain lace and beaded stitch techniques, working from both charts and written instructions.

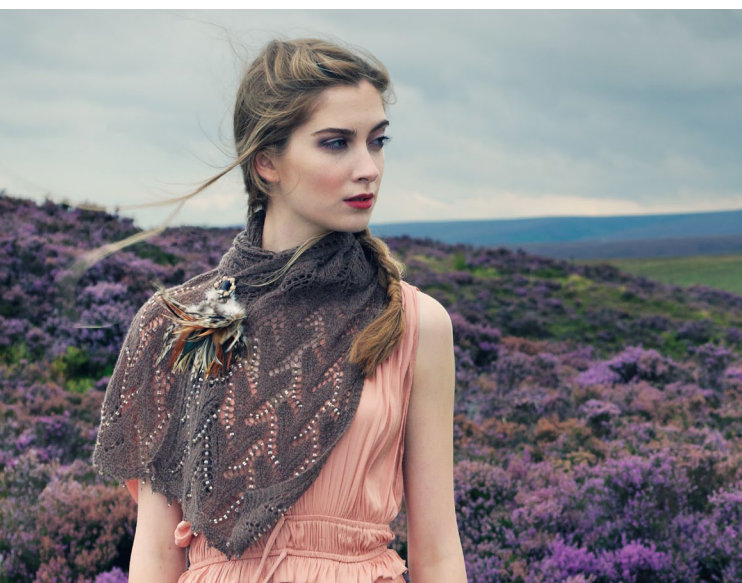
3.00 pm

Tea and scones.

4.00 pm

Workshop concludes

Participants are able to revisit the gardens and take a lingering wander around the Chatsworth shops.



Itinerary

SUNDAY 19th APRIL 2020

10.00 am

Tea, coffee and pastries on arrival.



10.30 am

Workshop - Part two

Using graph paper and your photographs, swatches and notes Louisa will guide you through the hand knit design process. You will begin to work on a pattern for your own original design.



12.30 pm

Two course buffet lunch.

1.30 pm

Workshop - Part three

A continuation of your design and knitting design work with helpful advice, guidance and input from Louisa.



3.00 pm

Tea and scones and a conclusion to the weekend with a group discussion of design work.

4.00 pm

Workshop winds up and we say our goodbyes.





CHATSWORTH

Cost for the workshop: £320

Deposit: £100 on booking (*non refundable*)

Remainder to be paid by March 16th 2020: £220

Maximum participants: 15

Included in your workshop:

Private tour of Chatsworth House.

2 course Buffet lunch and refreshments both days - *please let us know of any dietary requirements.*

Samples of Cashmere yarn for swatching and designing.

A Yarntelier goody bag containing two balls of Yarntelier Cashmere Lace or Gilli in a shade of your choice to complete your design project. Complementary parking.

What you will need to bring with you:

Knitting needles - 4 & 5 mm

Notions - sewing up needle, scissors, stitch markers.

Pencils, sketch/note book, camera/phone to take photos with.

Location:

Chatsworth is located in central England, in the heart of the Peak District in Derbyshire.

It is north of Derby and south of Sheffield.

Chatsworth, Bakewell, Derbyshire, DE45 1PP

If you are travelling using a sat nav system, please use the postcode DE45 1PN.

Accommodation:

If you are traveling a distance to Chatsworth House for the workshop there are a collection of hotels, inns, cottages and restaurants on and around the Chatsworth Estate that will make your visit that little bit more comfortable and special.

Visit the chatsworthstays.co.uk website to find out more and to book accommodation online.

For more information about this exciting Yarntelier at Chatsworth weekend email us at contact@yarntelier.com